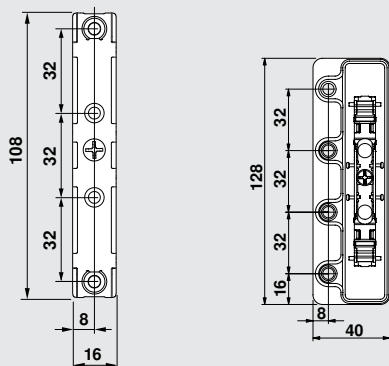


# AVENTOS HL

## Wood/wide aluminum hardware set

### Package contents

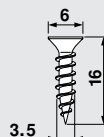


2 x 20S4200 wood/wide alum. mounting plate

2 x 20S4F01 wood/wide alum. mounting plate with bracket

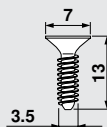


POZI #2x2 driver bit for adjusting tension



22 x 606P wood door screw for mounting plates

■ Only 8 screws required for installation



7072A alum. door screws for mounting plates

■ Only 8 screws required for installation

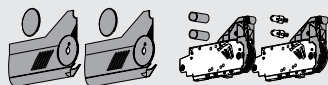
Part no.

Hardware set

**20S4200.L1**

## Also required (sold separately)

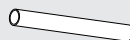
### Lift mechanism set



Set includes:

- 2 x lift mechanisms
- 2 x cover plates (right and left)
- 2 x cover caps
- 2 x stabilizer rod cover caps
- 2 x stabilizer rod adapters
- 10 x #7x35mm (1-3/8") wood screws

### Oval stabilizer rod



Cut to length

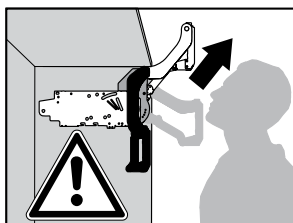
Length = Interior cabinet opening - 120mm

### Arm assembly set



2 x arm assemblies (right and left)

# Assembly

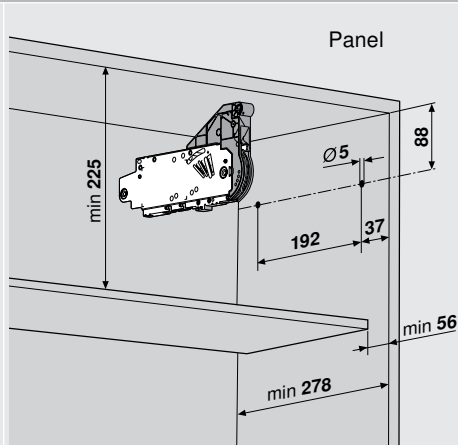
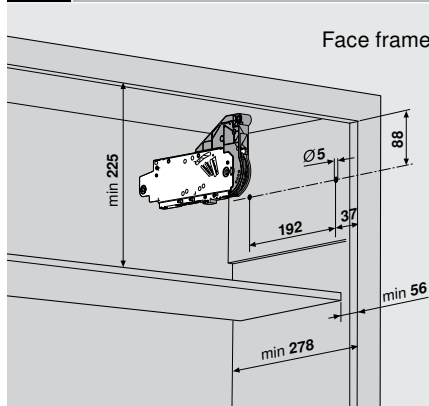


## WARNING

Risk of injury from spring-loaded arm

- Do not push arm assembly down or leave in the down position
- Remove mechanism before installing or removing cabinet

### 1 Locating pin locations and minimum depth



**NOTE:** Face frame cabinets must be blocked out flush with the frame.

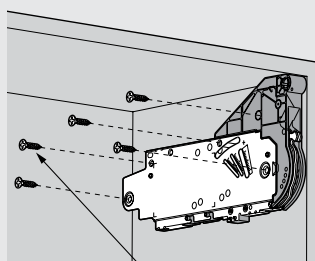
Part no.

AVENTOS boring template is available for pre-boring 5mm locating pins

**65.5020**

### 2 Attaching the lift mechanism

- Use the AVENTOS template to pre-bore the locating pin holes for the AVENTOS HL lift mechanism.
- After aligning the lift mechanism with the cabinet using the locator pins, attach the mechanism with the five mounting screws provided.



(5) wood screws **#7x35 mm**

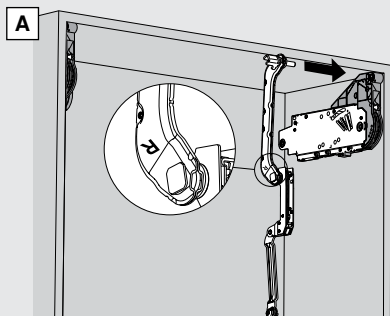
### 3 Attaching the arm assembly



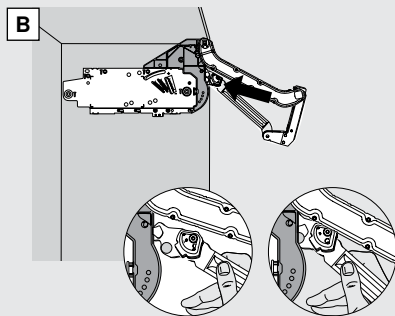
Risk of injury from spring loaded arm

**NOTE:** Before starting, see safety note on page 2

Find the right and left arm assemblies and match them to the correct side of the cabinet



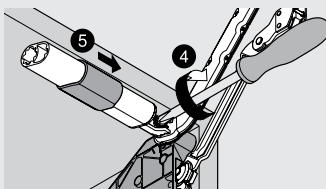
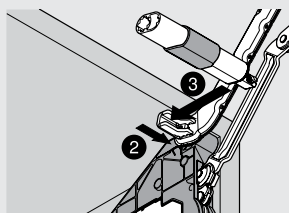
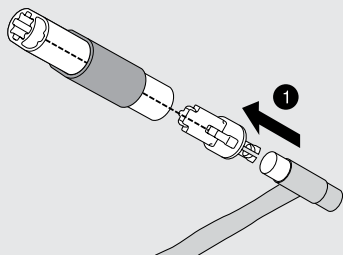
Attach the arm assembly to the lift mechanism as shown in illustrations A and B.



Lift up on the arm assembly to lock into place.

### 4 Attaching the stabilizer rod

Cut the stabilizer rod to fit the cabinet.  
Length = Interior cabinet opening - 120

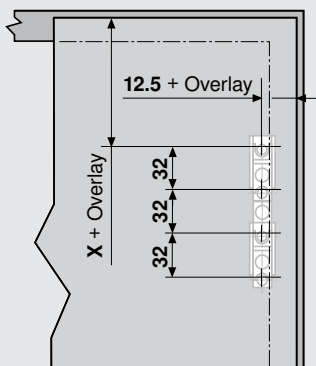


After cutting the rod to size, slide the stabilizer arm cover caps onto the rod. Insert the stabilizer rod adapters being careful to line up the tabs (shown with dotted lines). Attach the rod assembly to each arm assembly and tighten the locking screw.

# Assembly

## Attaching the mounting plates

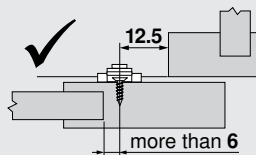
### 5a For Wood/wide alum. doors



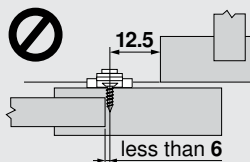
Arm assembly	X
20L3200	153
20L3500	203
20L3800	253
20L3900	303

**NOTE:** All four screws must be installed

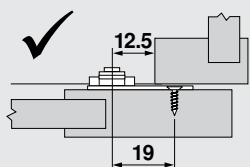
### 5b With bracket for 5-panel doors



Standard mounting plate works

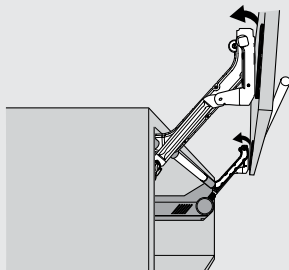
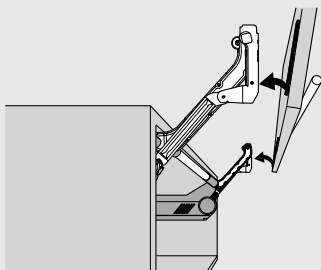


Standard mounting plate does not work



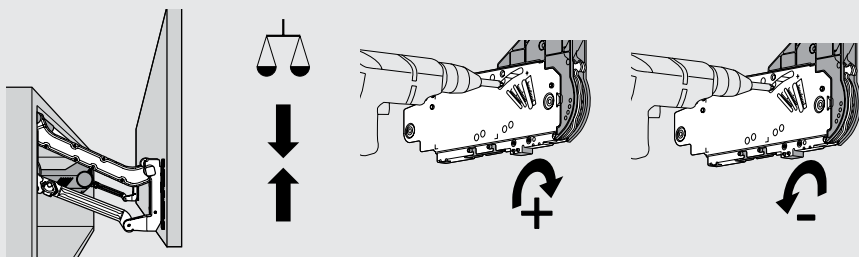
Use mounting plate with bracket when panel is < 6mm from screw

## 6 Attaching the door



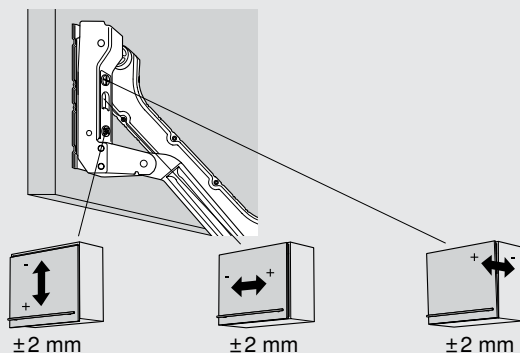
Attach the door to the arm assembly using the CLIP mechanism.

## 7 Adjusting the lift mechanism tension



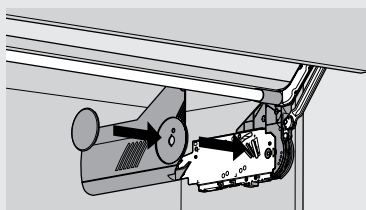
Use a screw gun and the supplied #2x2 POZI driver bit to adjust the lift mechanism to the desired tension.

## 8 Adjusting the door



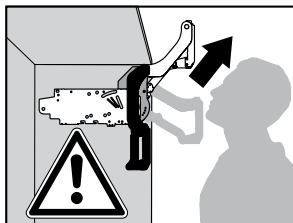
Use a POZI screwdriver to adjust cam adjustments for each of the 3-dimensional adjustments. Tension should be the same on both lift mechanisms.

## 9 Attach covers



Snap the symmetrical cover caps on each cover plate. Place the left and right cover plates over the appropriate lift mechanisms and snap them in place.

# Removal

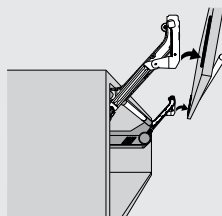
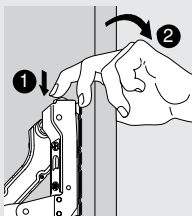


## WARNING

Risk of injury from spring-loaded arm

- Do not push arm assembly down or leave in the down position
- Remove mechanism before installing or removing cabinet

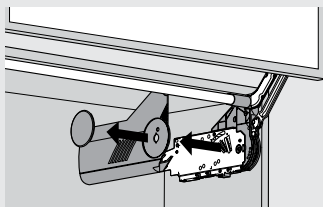
### 1 Removing the door



Open the door. Support the door with one hand and push down tab to disengage the CLIP mechanisms of the arm assemblies of the mounting plates.

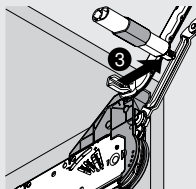
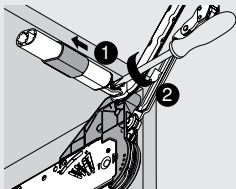
Lift the door off the mounting plates.

### 2 Remove the covers



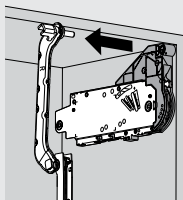
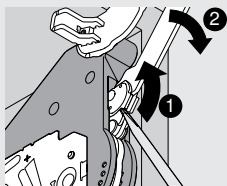
Remove the cover caps and cover plate.

### 3 Remove the stabilizer rod



Pull back the stabilizer rod cover caps and loosen the locking screws on each end of the stabilizer rod. Remove the stabilizer rod from the cabinet.

#### 4 Removing the arm assembly



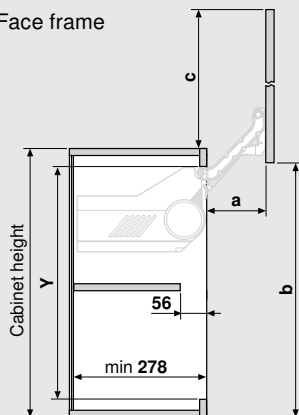
Use a screwdriver to disengage both arm assemblies. Remove arm assembly from mechanism.

**NOTE:** Both tabs must be disengaged

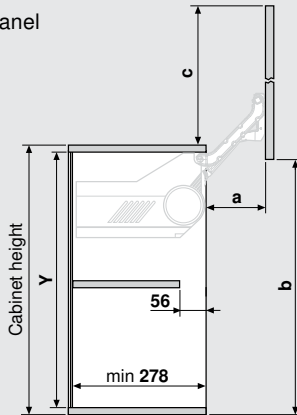
# Other information

## Space requirements

Face frame



Panel



Face frame

Arm assembly	Cabinet height	Min. Y	a	b*	c*
20L3200	300 - 349 (11-13/16" - 13-3/4")	262	114	257	241
20L3500	350 - 399 (13-13/16" - 15-13/16")	312	146.5	345.5	331
20L3800	400 - 550 (15-3/4" - 21-5/8")	362	178.5	434	419
20L3900	450 - 580 (17-11/16" - 22-13/16")	412	211	522	507

\* based on 1-1/2" face frame

Panel

Arm assembly	Cabinet height	Min. Y	a	b*	c*
20L3200	300 - 349 (11-13/16" - 13-3/4")	262	114	276	260
20L3500	350 - 399 (13-13/16" - 15-13/16")	312	146.5	364.5	350
20L3800	400 - 550 (15-3/4" - 21-5/8")	362	178.5	453	438
20L3900	450 - 580 (17-11/16" - 22-13/16")	412	211	541	526

\* based on 19mm top panel

Inch	mm
1/32	.031
1/16	.063
3/32	.094
1/8	.125
5/32	.156
3/16	.188
7/32	.219
1/4	.25
9/32	.281
5/16	.313
11/32	.344
3/8	.375
13/32	.406
7/16	.438
15/32	.469
1/2	.5
17/32	.531
9/16	.563
19/32	.594
5/8	.625
21/32	.656
11/16	.688
23/32	.719
3/4	.75
25/32	.781
13/16	.813
27/32	.844
7/8	.875
29/32	.906
15/16	.938
31/32	.969
1	1

Blum, Inc.  
7733 Old Plank Rd.  
Stanley, NC 28164  
800-438-6788  
704-827-1345  
fax 704-827-0799  
sales.us@blum.com  
www.blum.com



INST-AVT10-02.08